

Sample Boards 2018

LAST UPDATED: 25-01-2021

DEMO

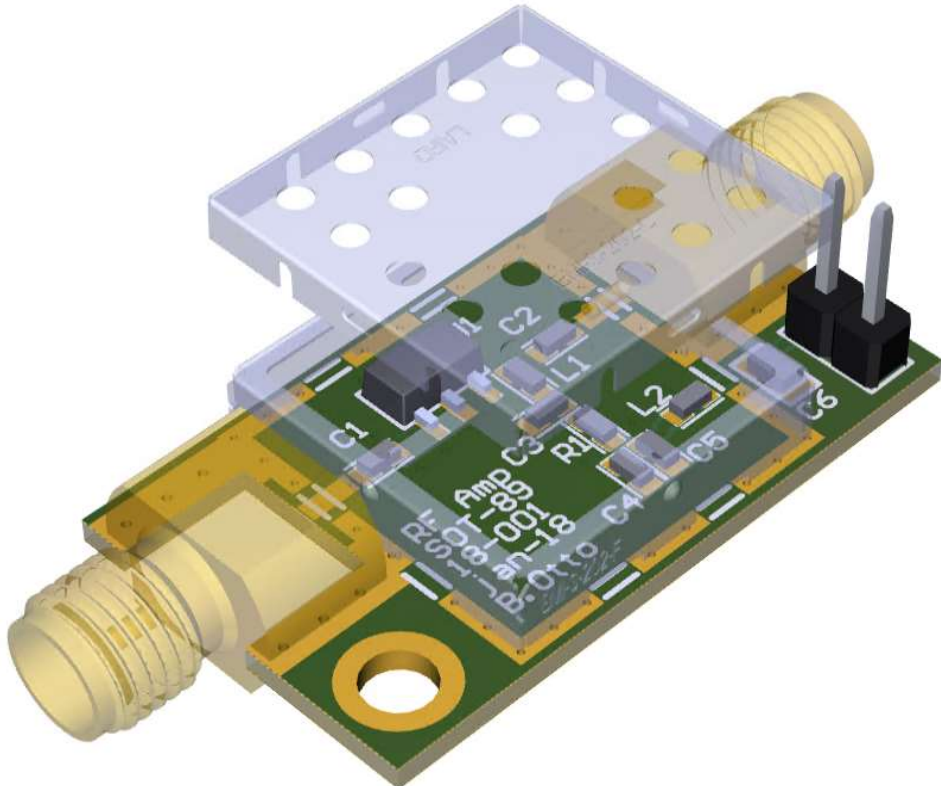
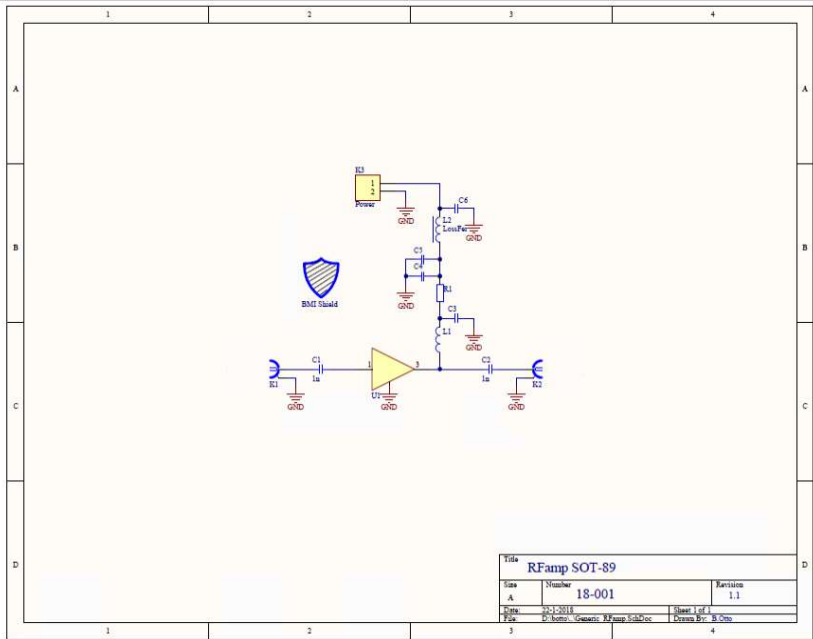


Sample Boards

18-001 RF amp SOT-89	3
18-002 Narrow-band Band-stop Filter	4
Filter board.....	4
18-003 RF Bandpass Filter	5
18-006 Sampleboard Thierschmann V2	6
Sample Board.....	6
18-008 PCB DRAM Andrea Corna	7
Sample Board.....	7
18-010 Log Amp break junction.....	8
18-012 100CH CuP Filter	9
18-013 Copper Powder Stick.....	10
18-014 Sample Interface Daniël	11
18-015 Sample Boards Pascal Gehring.....	12
18-016 Sample board Stephan Philips	13
18-017 Sample PCB Atilla	14
18-018 Sample PCB Anne-Marije.....	15
18-019 2uD25 FFC50verticaal	16
18-020 InGaAs photodiode with transimpedance amplifier.....	17
18-021 Power Amp Piezo driver single channel	18
18-022 Rotary Switch PCB	19
18-023 Filter PCB Fristi	20
18-025 Combiner PCB Fristi.....	21

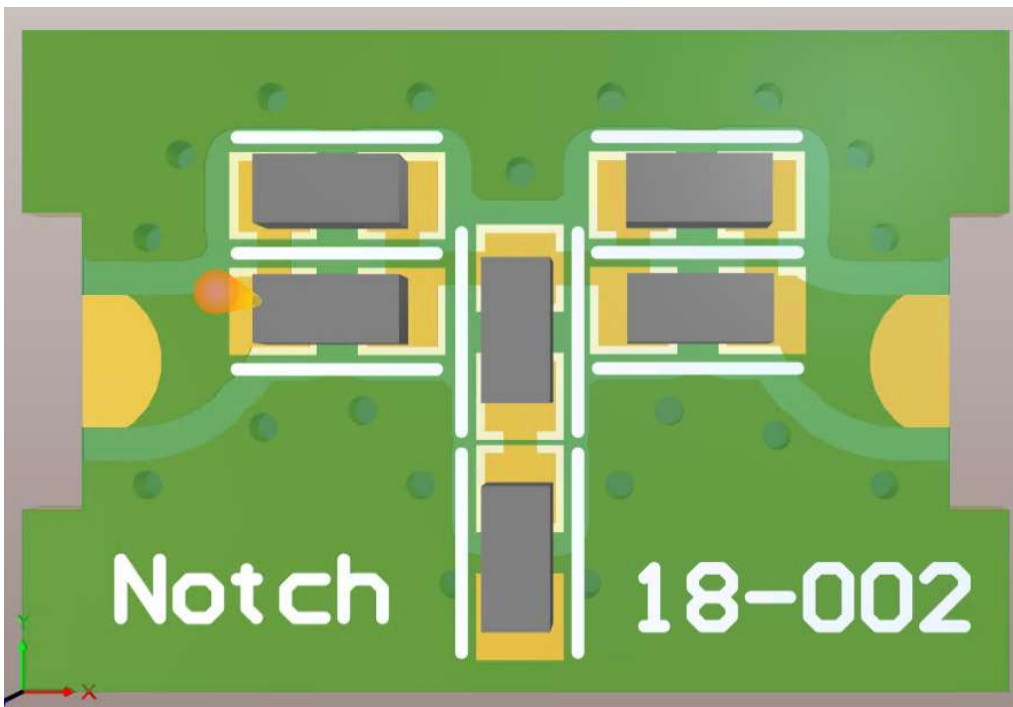
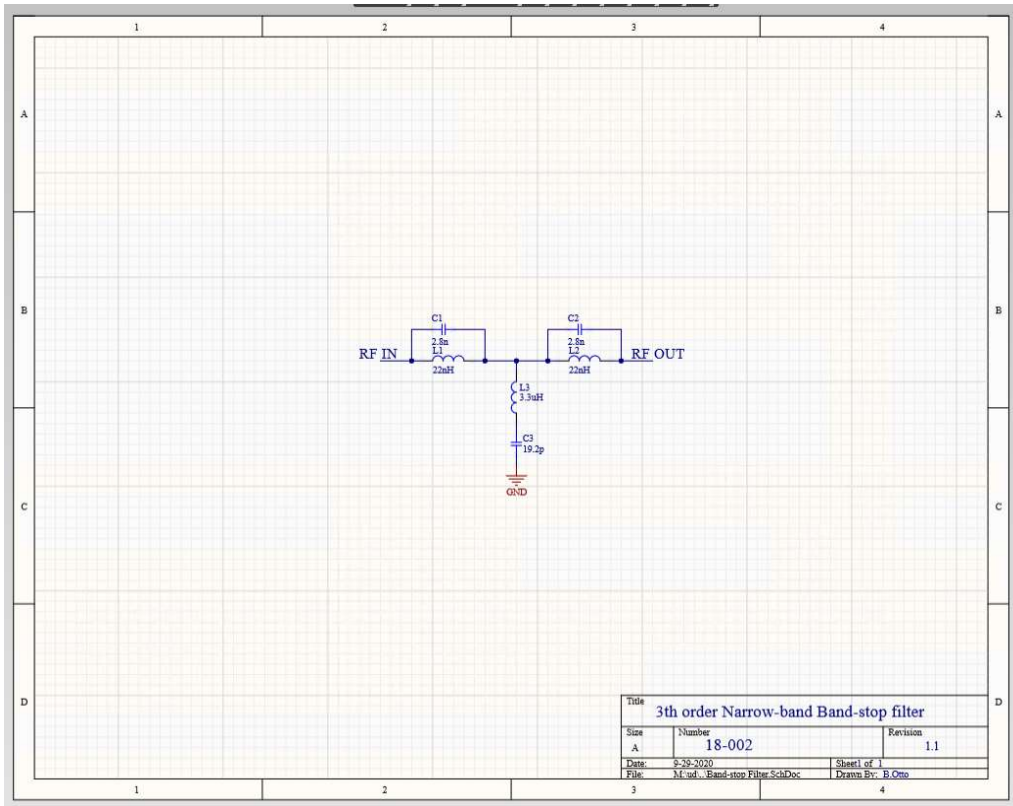
18-001 RF amp SOT-89

RF AMP



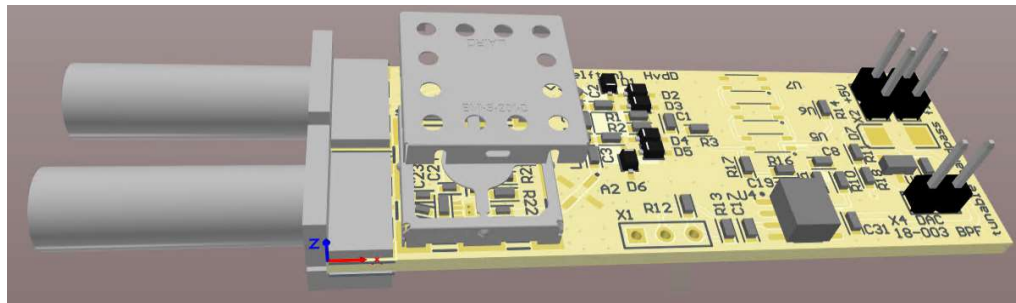
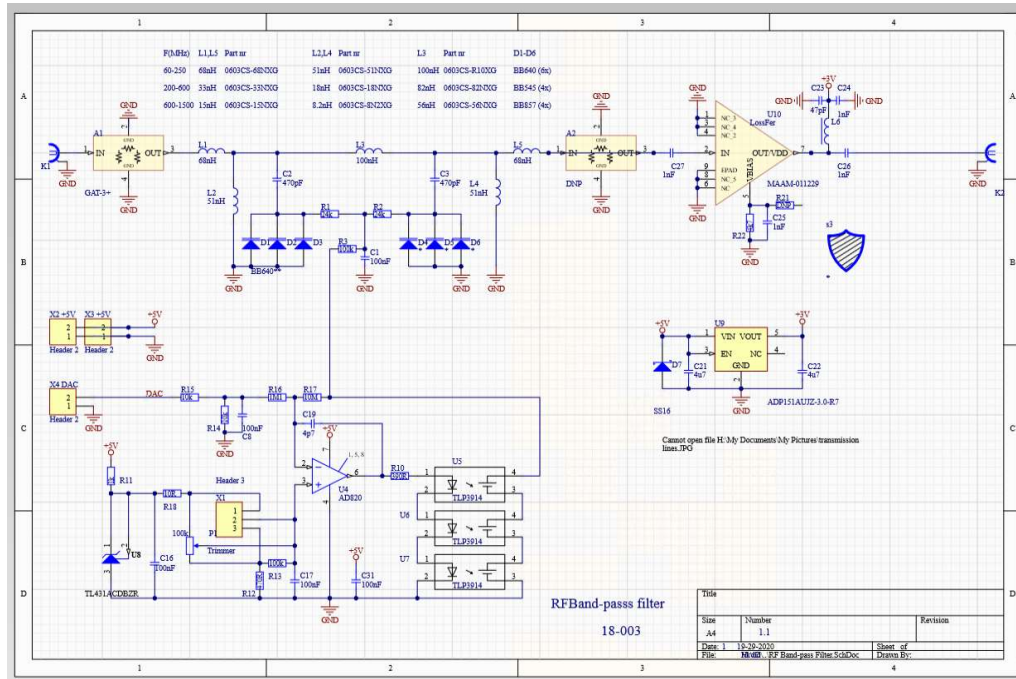
18-002 Narrow-band Band-stop Filter

Filter board



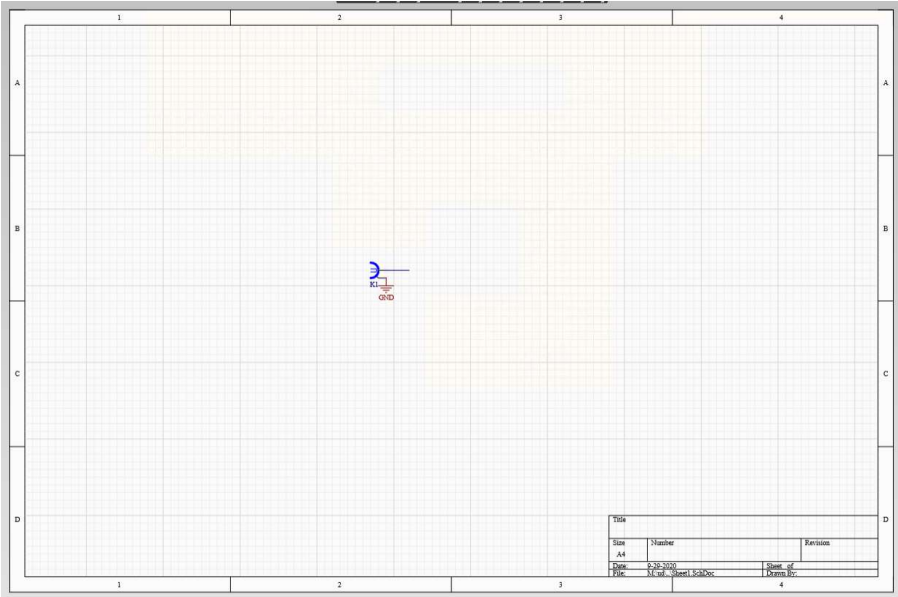
18-003 RF Bandpass Filter

Filter Board



18-006 Sampleboard Thierschmann V2

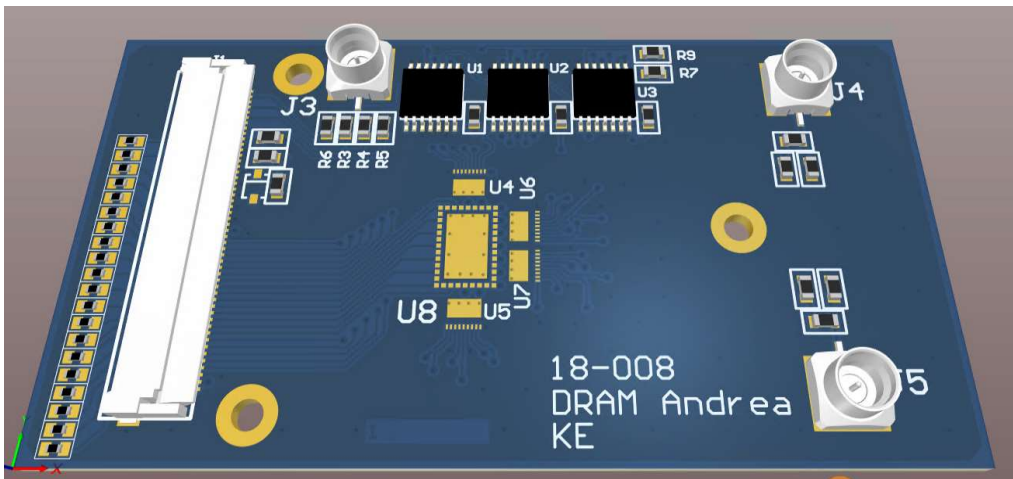
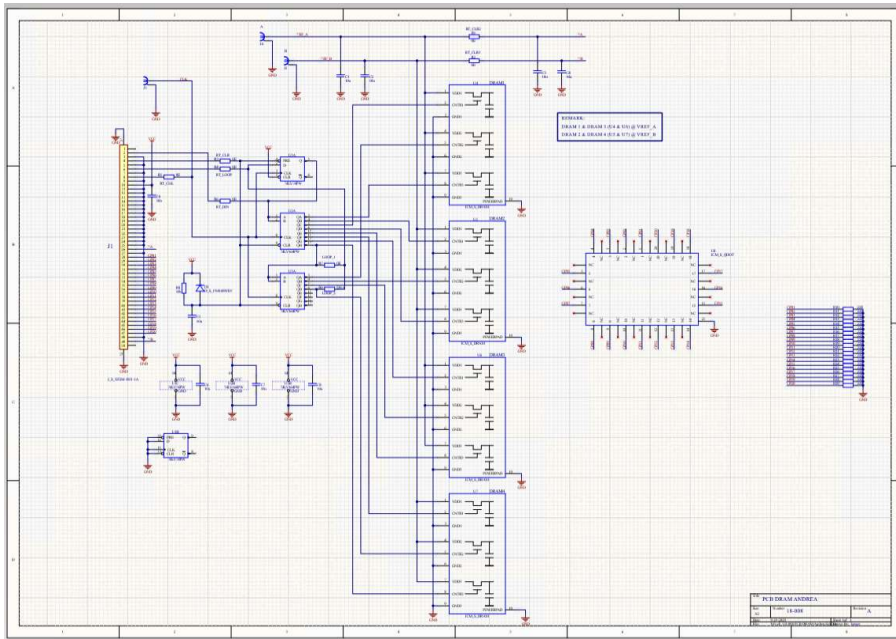
Sample Board



18-008 PCB DRAM Andrea Corna

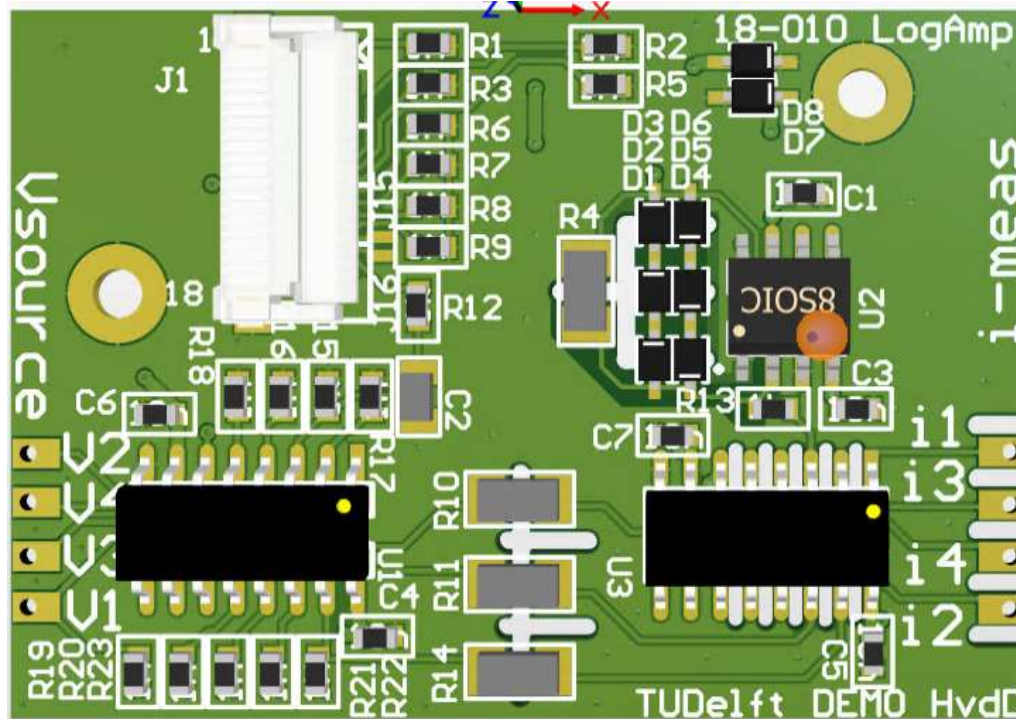
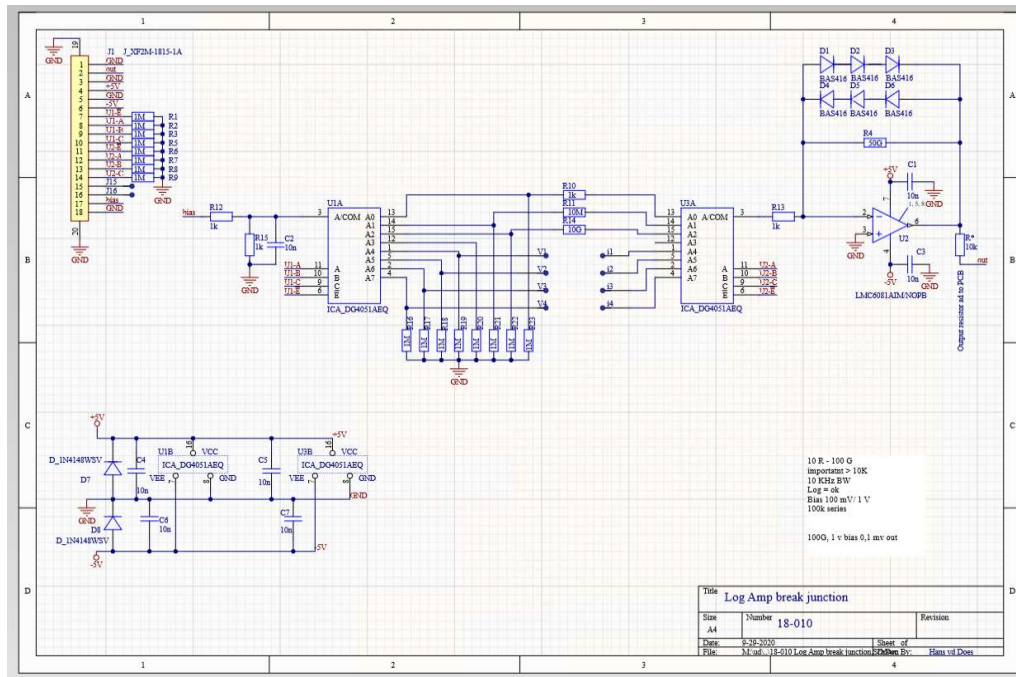
Sample Board

size (LxWxT): 65 x 35 x ? mm



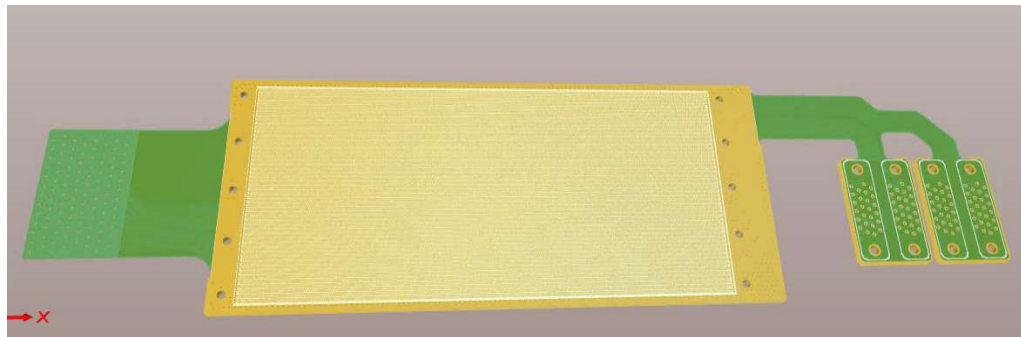
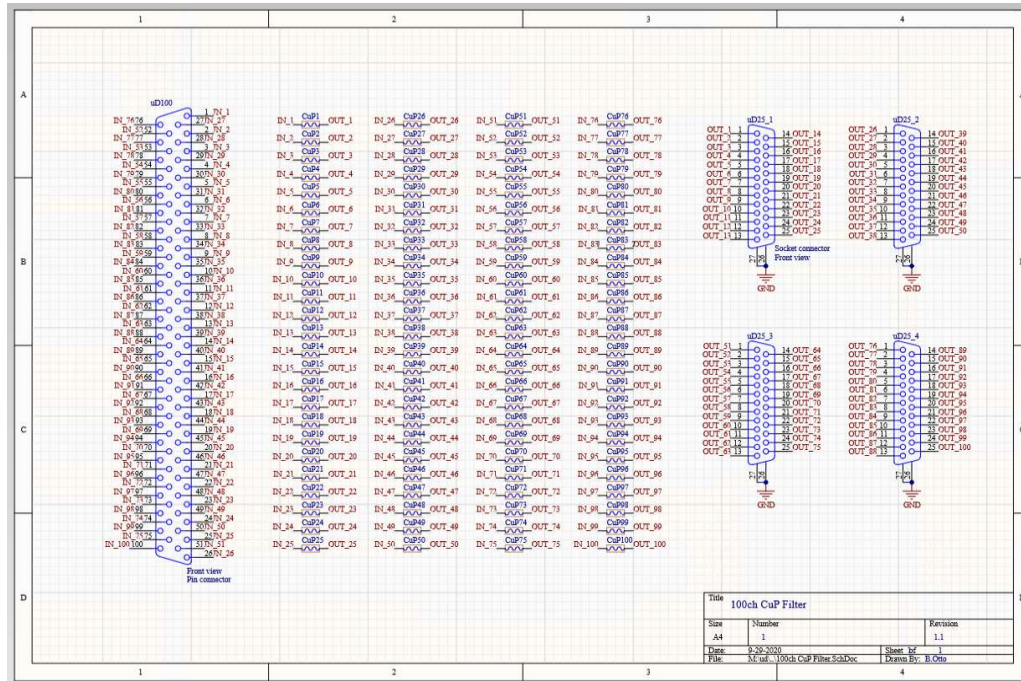
18-010 Log Amp break junction

size (LxWxT): 43 x 30 x ? mm



18-012 100CH CuP Filter

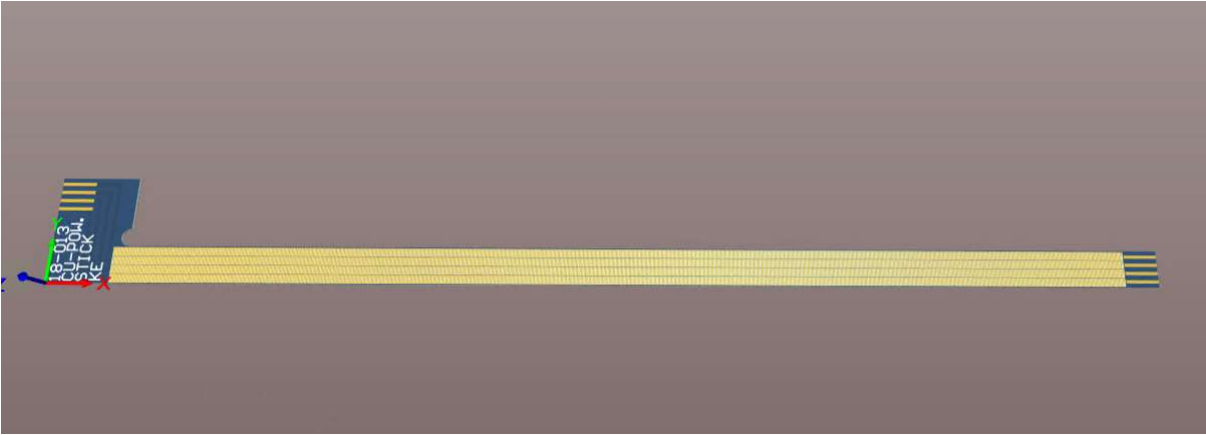
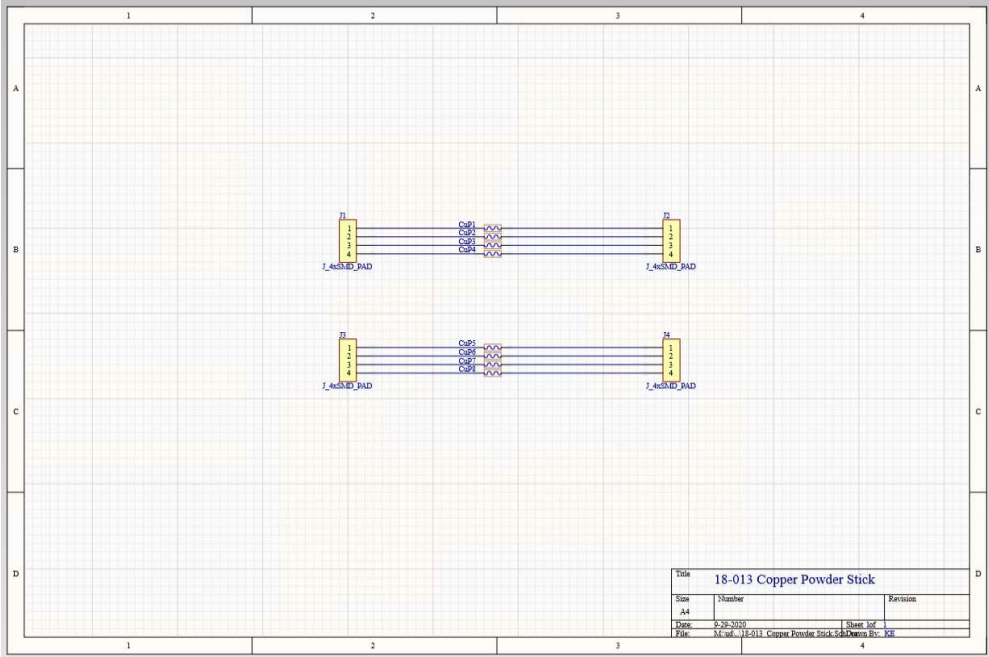
Filter Board



18-013 Copper Powder Stick

Filter Board

size (LxWxT): 166.6 x 16 x 1.6 mm

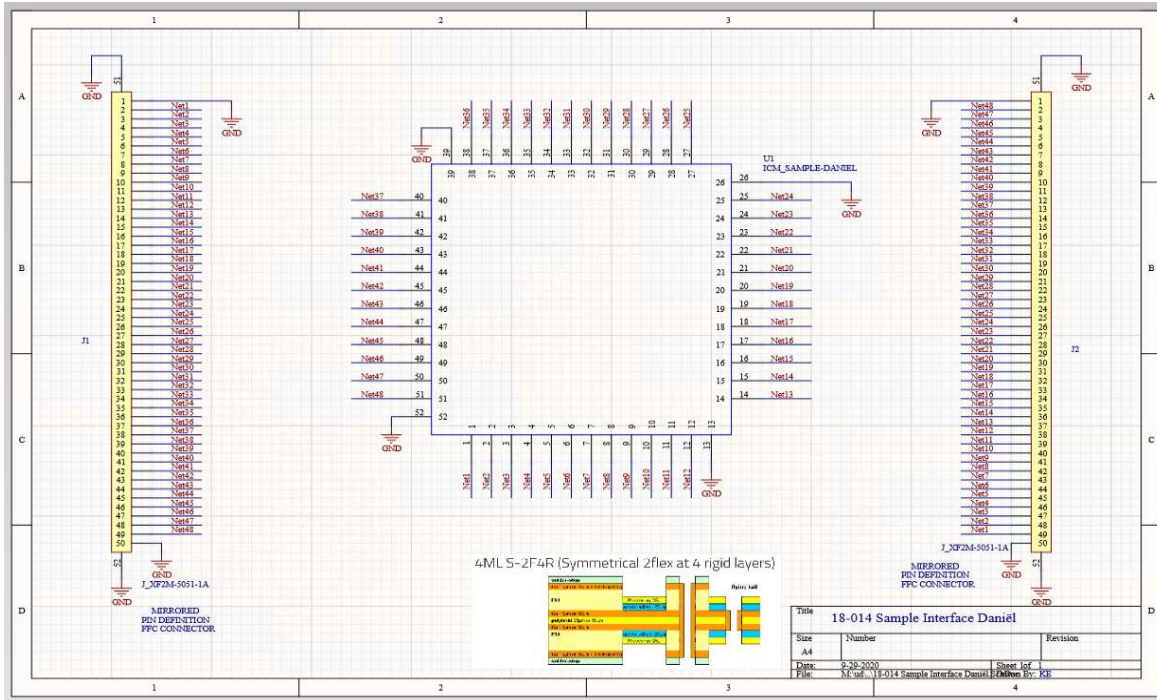


18-014 Sample Interface Daniël

Sample board / interface

size (LxWxT): 74.5 x 33 x ? mm / 110 x 33 x ? mm

Sample Hole: 10 x 10 mm



18-015 Sample Boards Pascal Gehring

Sample Board

size (LxWxT): 49 x 24 x ? mm

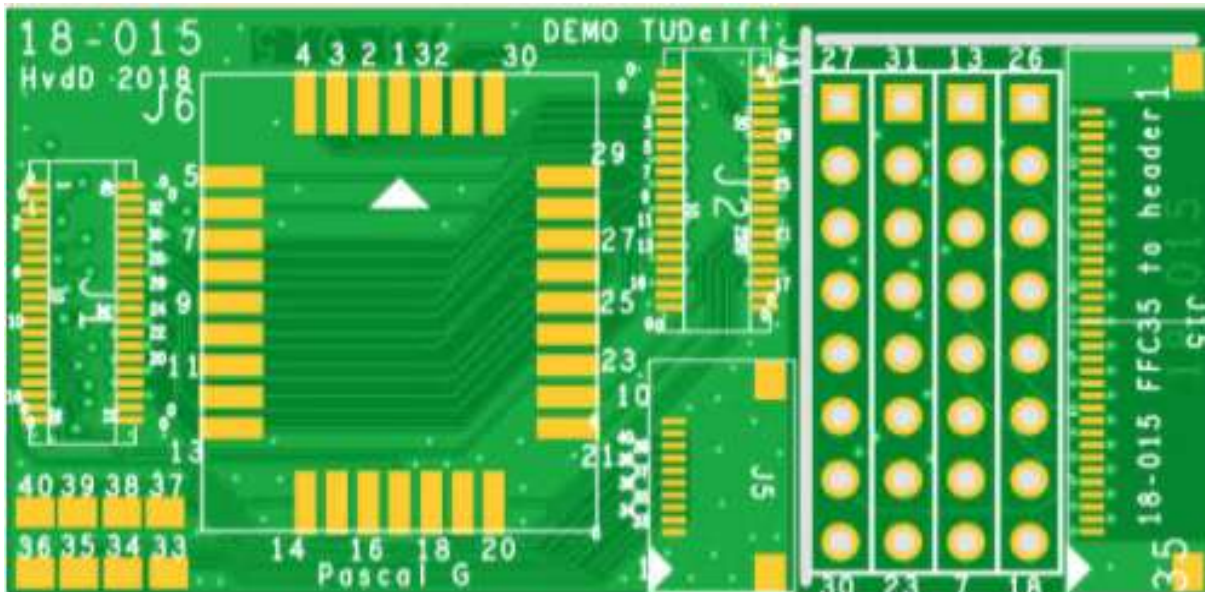
Set up aanzichten: JK, gdw180.jpg

molex

Mouser Part No: 538-55560-0407
Manufacturer Part No: 55560-0407
Manufacturer: Molex
Description: Board to Board & 0.5 mm SMT Dual
[Learn more about](#)
 55560-0407 Ds

TU Delft Delft University of Technology

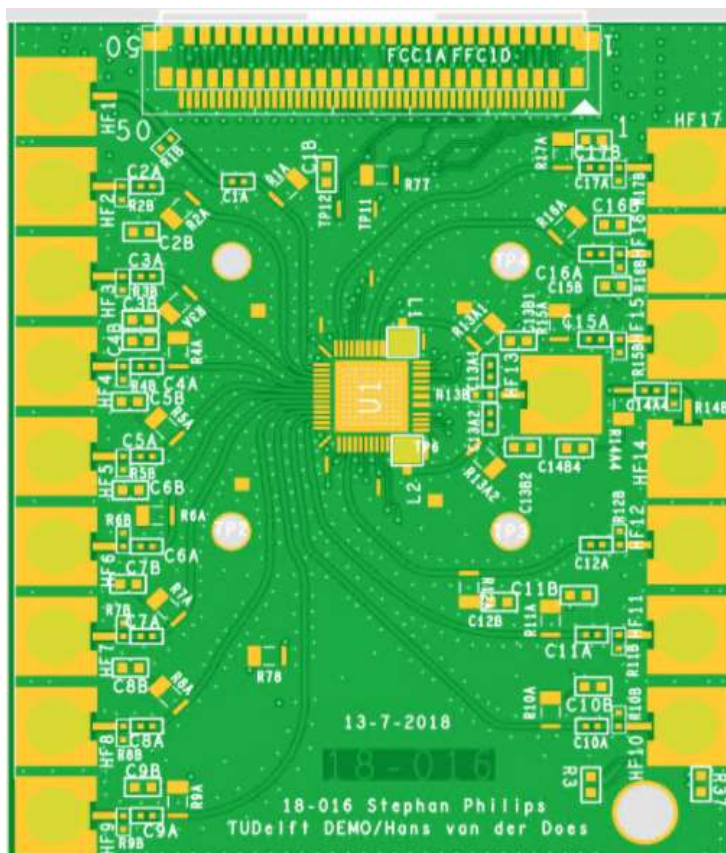
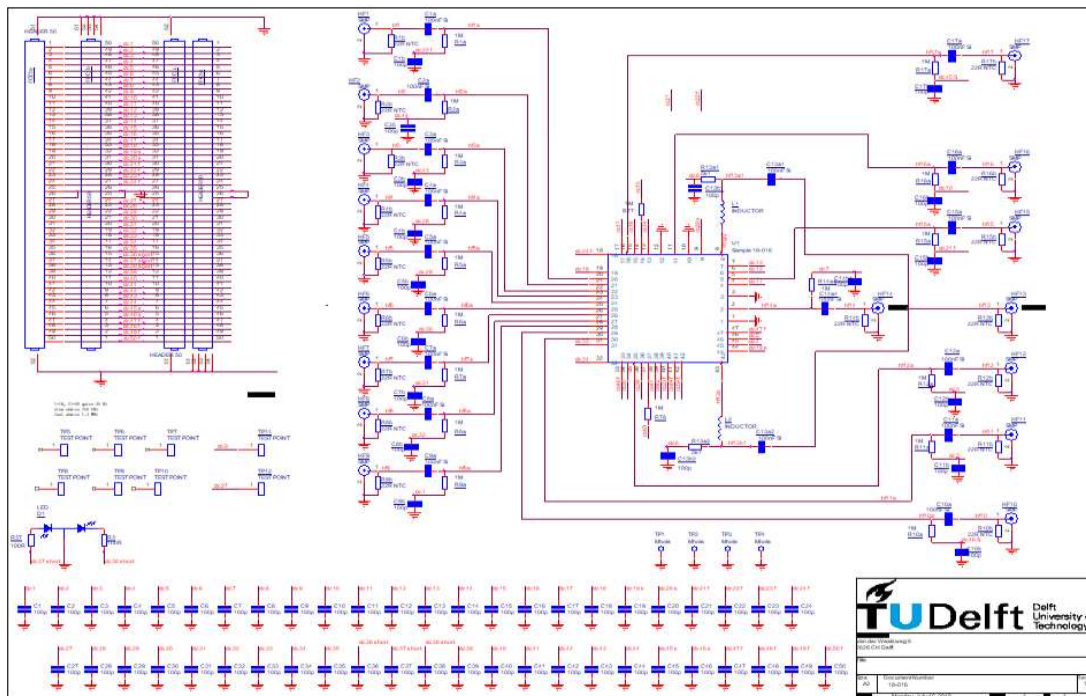
18-015
 HvdD 2018
 Pascal G
 DEMO TU Delft
 51F
 18-015 FFC35 to header 1
 51F



18-016 Sample board Stephan Philips

Sample Board

size (LxWxT): 56 x 47 x ? mm

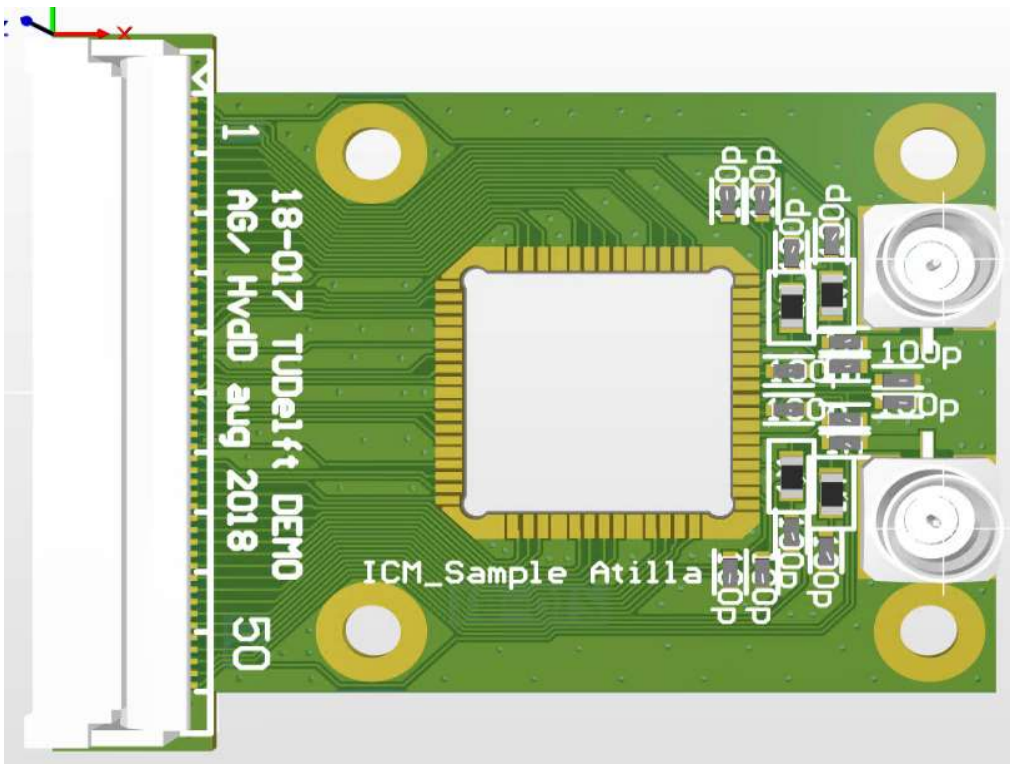
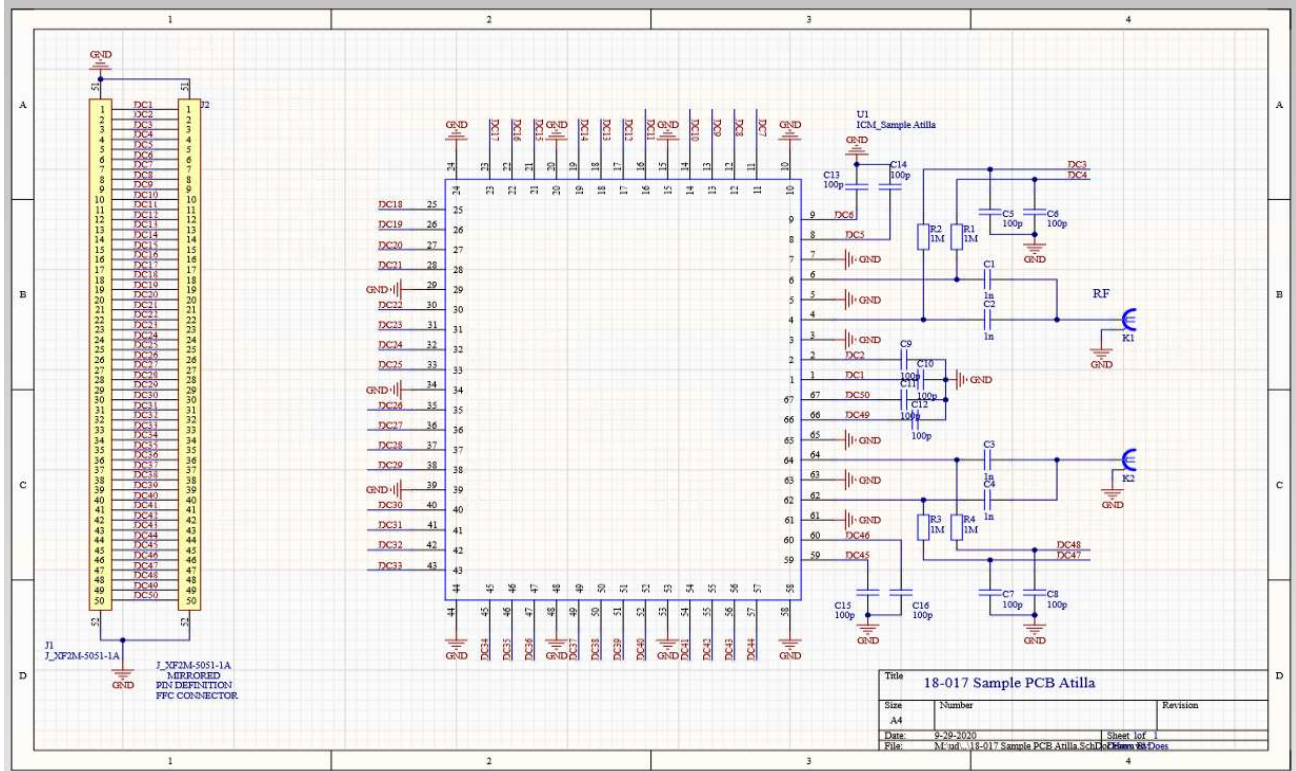


18-017 Sample PCB Atilla

Sample Board

size (LxWxT): 35.5 x 30 x ? mm

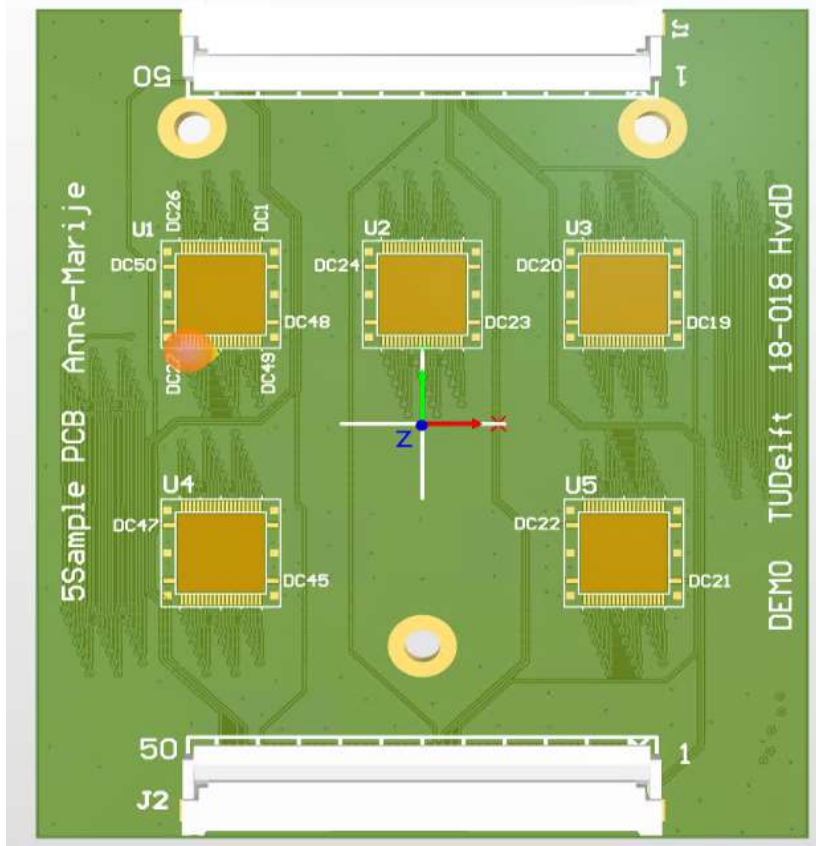
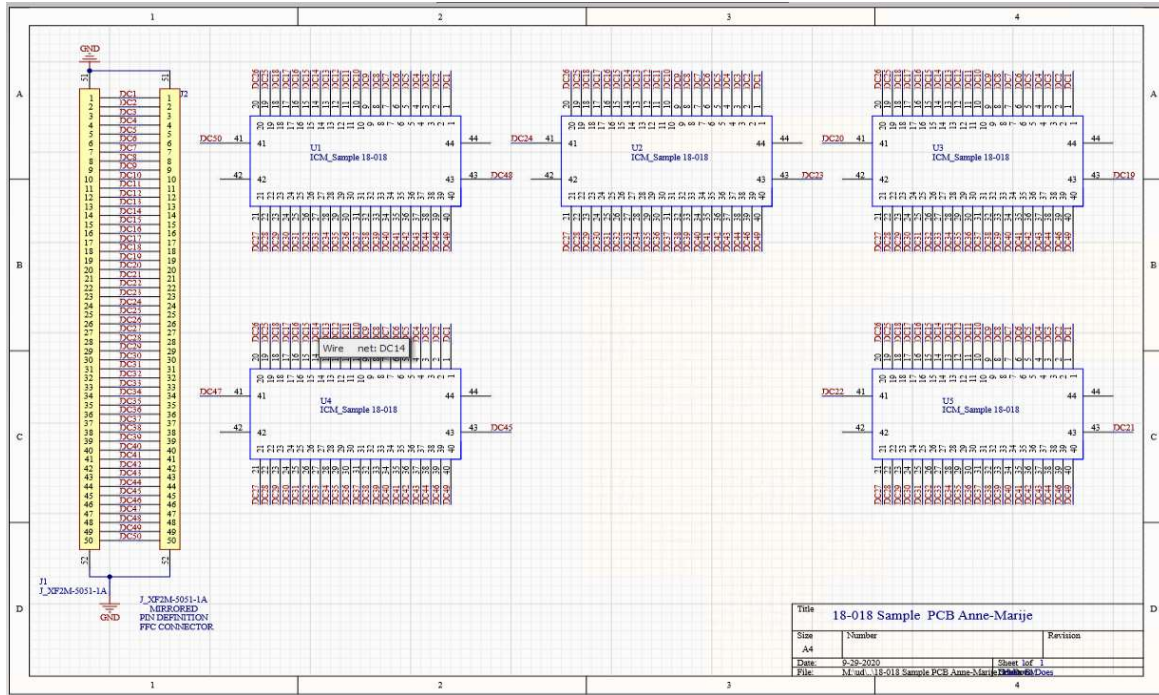
Sample hole: 10 x 10 mm



18-018 Sample PCB Anne-Marije

Sample Board

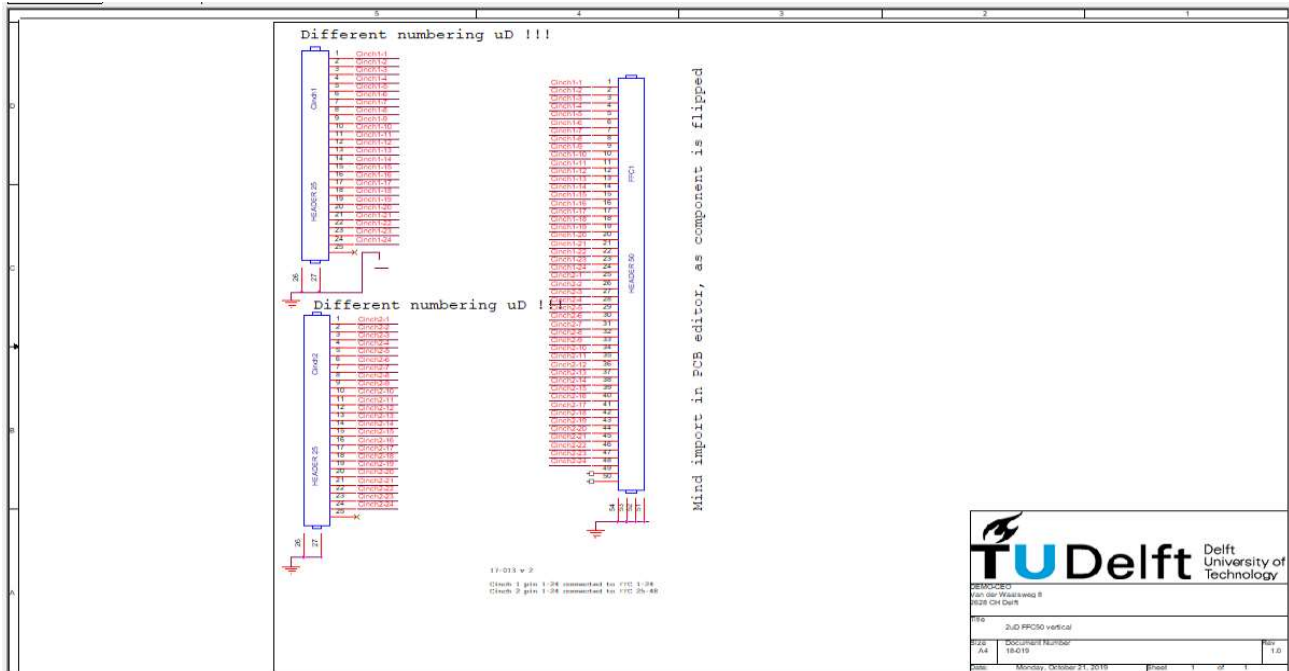
size (LxWxT): 56 x 47 x ? mm



18-019 2uD25 FFC50verticaal

Interface (Male / Female version)

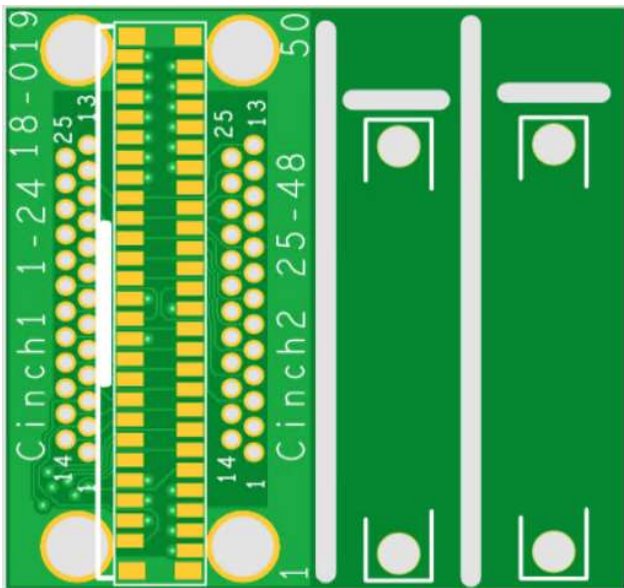
size (LxWxT): 29 x 15 x ? mm



TU Delft Delft University of Technology

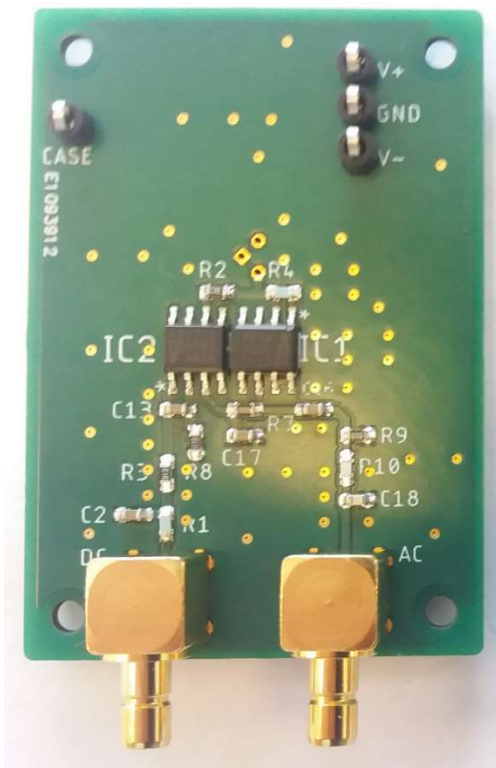
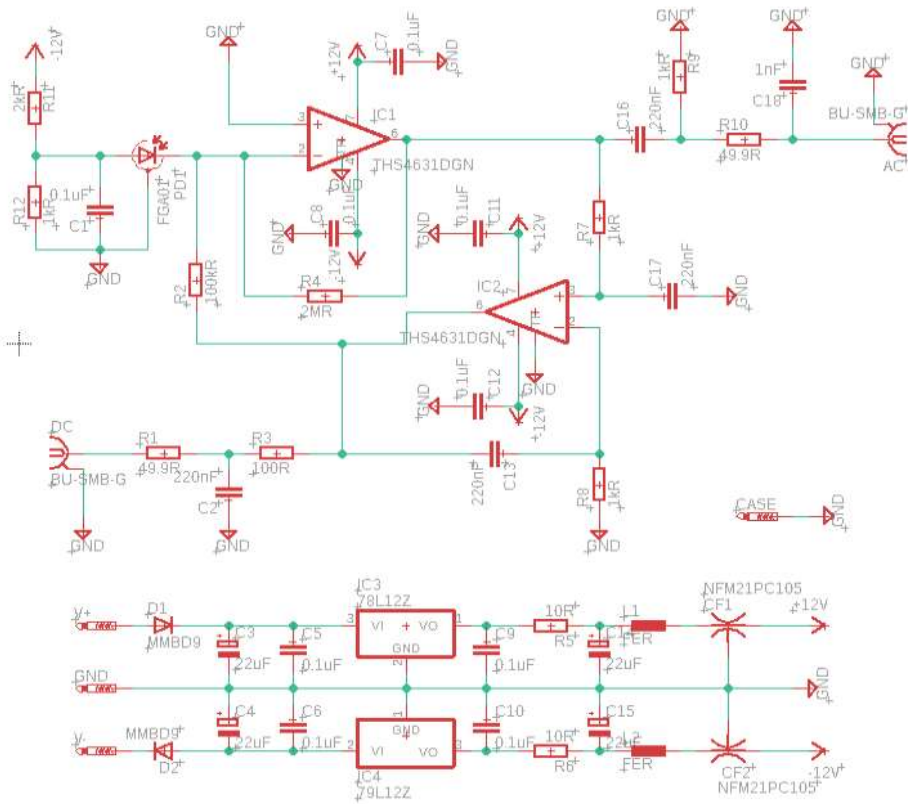
SEMOCO
 Van der Waalsweg 8
 2628 CH Delft

DES	2UD FFC50 vertical	REV	1.0
DES	DOCUMENT NUMBER		
A4	18-019		
DATE	Monday, October 21, 2019	DESIGN	1/29/1



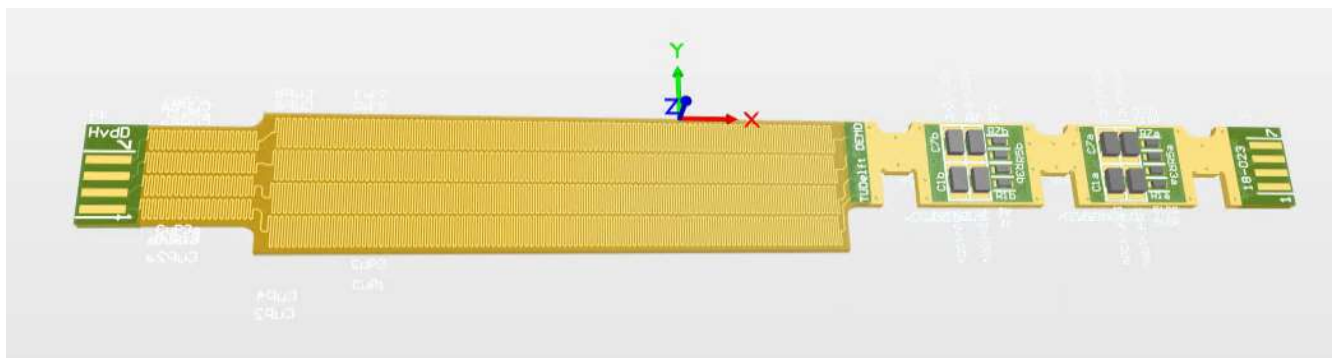
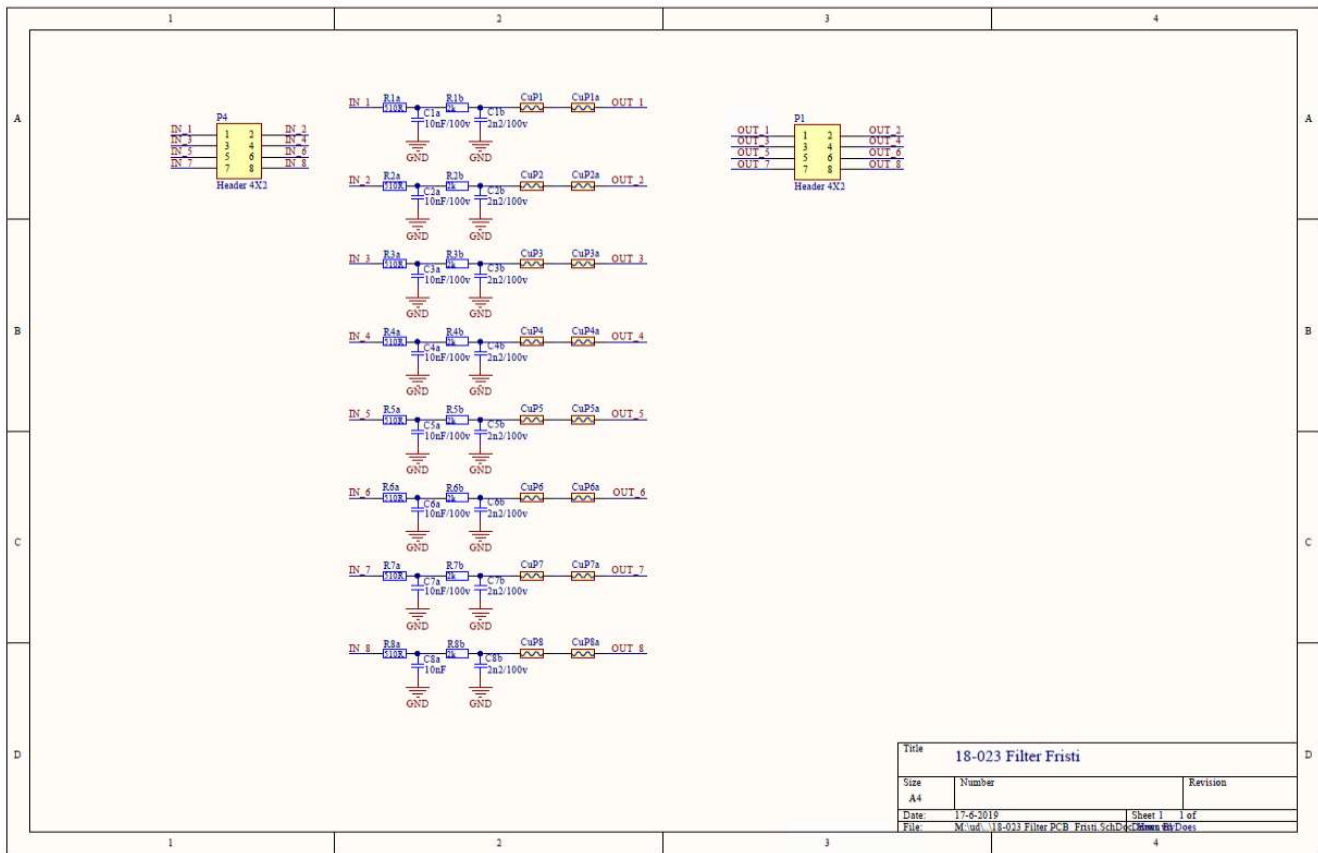
(Male version)

18-020 InGaAs photodiode with transimpedance amplifier



18-023 Filter PCB Fristi

size (LxWxT): 95 x 11 x ? mm



18-025 Combiner PCB Fristi

